

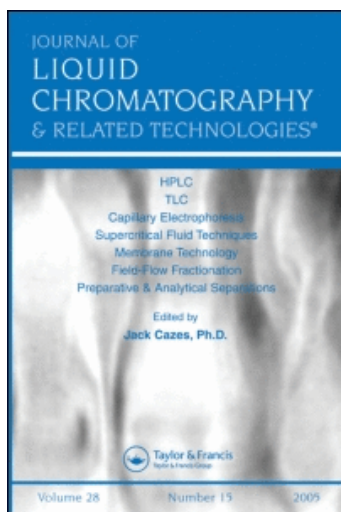
This article was downloaded by:

On: 24 January 2011

Access details: *Access Details: Free Access*

Publisher *Taylor & Francis*

Informa Ltd Registered in England and Wales Registered Number: 1072954 Registered office: Mortimer House, 37-41 Mortimer Street, London W1T 3JH, UK



Journal of Liquid Chromatography & Related Technologies

Publication details, including instructions for authors and subscription information:

<http://www.informaworld.com/smpp/title~content=t713597273>

Erratum

To cite this Article (1995) 'Erratum', Journal of Liquid Chromatography & Related Technologies, 18: 13, 2703

To link to this Article: DOI: 10.1080/10826079508009320

URL: <http://dx.doi.org/10.1080/10826079508009320>

PLEASE SCROLL DOWN FOR ARTICLE

Full terms and conditions of use: <http://www.informaworld.com/terms-and-conditions-of-access.pdf>

This article may be used for research, teaching and private study purposes. Any substantial or systematic reproduction, re-distribution, re-selling, loan or sub-licensing, systematic supply or distribution in any form to anyone is expressly forbidden.

The publisher does not give any warranty express or implied or make any representation that the contents will be complete or accurate or up to date. The accuracy of any instructions, formulae and drug doses should be independently verified with primary sources. The publisher shall not be liable for any loss, actions, claims, proceedings, demand or costs or damages whatsoever or howsoever caused arising directly or indirectly in connection with or arising out of the use of this material.

ERRATUM

S. Chen, Y. Liu, D. W. Armstrong, J. I. Borrell, B. Martinez-Taipel, J. L. Matallana: "Enantioresolution of Substituted 2-Methoxy-6-oxo-1,4,5,6-tetrahydropyridine-3-carbonitriles on Macrocyclic Antibiotic and Cyclodextrin Stationary Phases," which was published in *Journal of Liquid Chromatography*, **18**, 1495-1507 (1995)

The separation data for compound L_{M1} in Table 1 of the above cited paper should be as follows:

$$\alpha = 1.20, R_S = 0.6$$

instead of:

$$\alpha = 2.19, R_S = 5.40$$